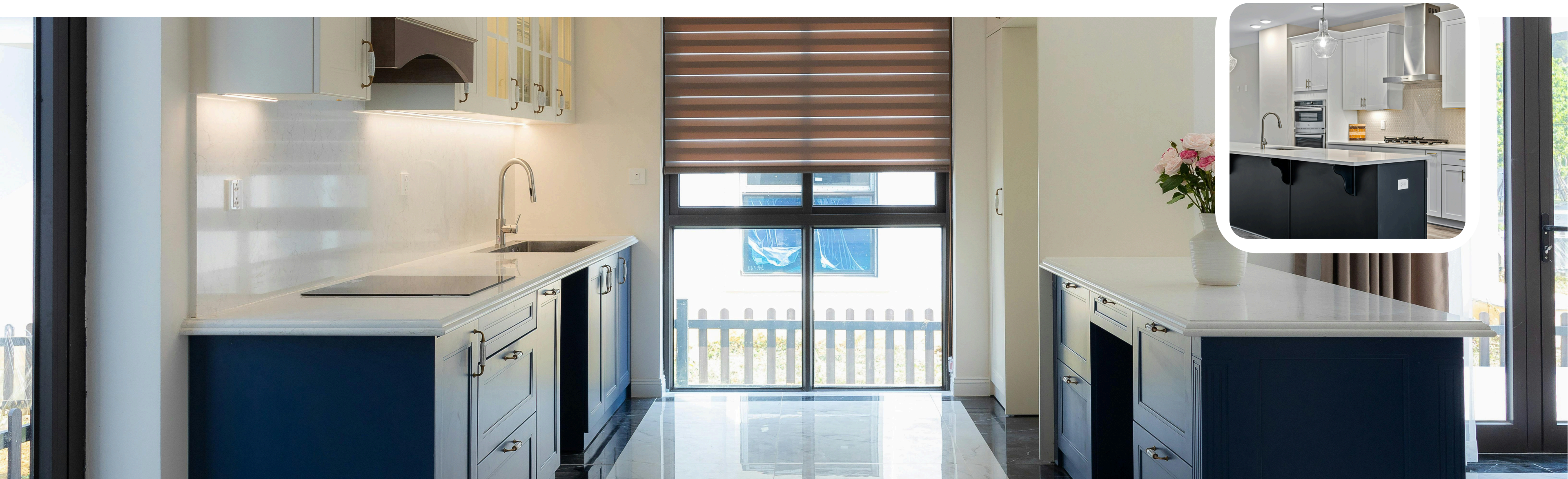




THE ENTIRE RANGE CRAFTED IN STAINLESS STEEL

KITCHEN

Kitchen Manufacturer, Supplier, and Exporter in India, offering premium, durable, and stylish kitchen solutions. We design space-efficient, ergonomic, and hygienic modular kitchens using advanced technology and high-quality materials. From L-shape and U-shape to island and fully customized kitchens, Laserform delivers modern designs with superior comfort, efficiency, and long-lasting performance.



MODULAR KITCHEN EQUIPMENT

About Us

Kitchen Manufacturer, Supplier, and Exporter in India, offering premium, durable, and stylish kitchen solutions. We design space-efficient, ergonomic, and hygienic modular kitchens using advanced technology and high-quality materials. From L-shape and U-shape to island and fully customized kitchens, Laserform delivers modern designs with superior comfort, efficiency, and long-lasting performance.

4.9

Good Reviews



WHAT ARE THE MOST ESSENTIAL MODULAR KITCHEN ACCESSORIES?



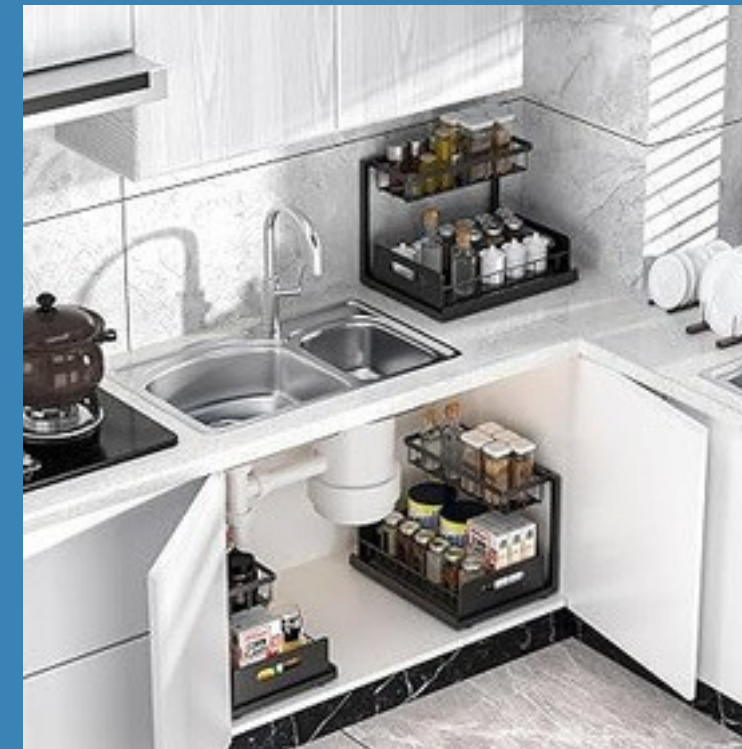
Drawer Systems

- Ideal for under-counter storage
- Easier access than bottom cabinets
- Offers shallow and deep storage options



Tall Units

- Perfect for storing long-shelf-life groceries
- Utilises vertical space like a pantry
- Blends seamlessly with kitchen walls



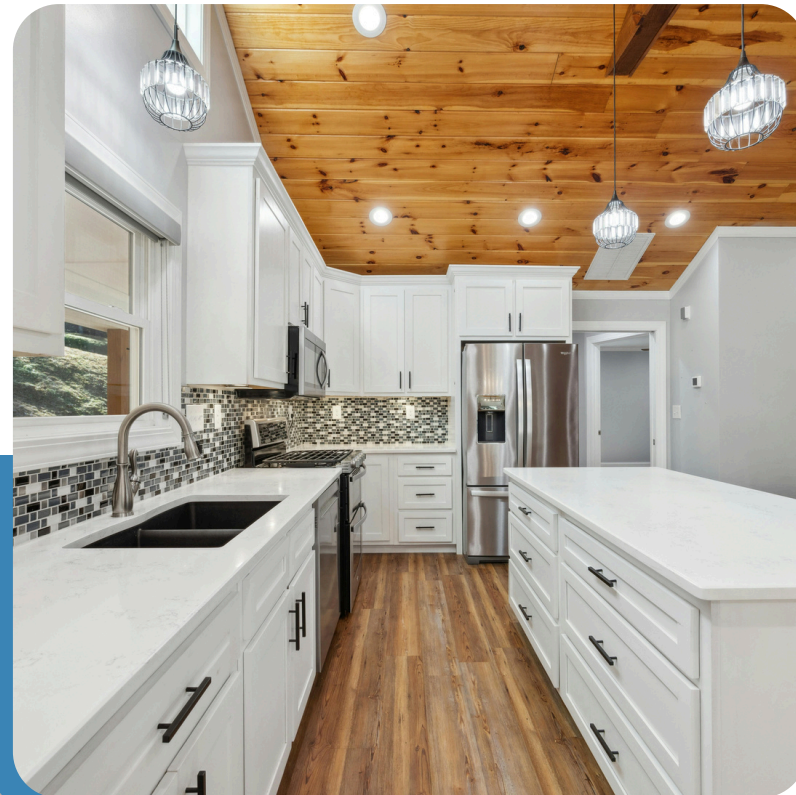
Under-Sink Units

- Keeps cleaning supplies easily accessible
- Eliminates clutter around the sink area
- Helps maintain a clean, organized kitchen



Corner Solutions

- Converts hard-to-reach corners into usable space
- Ideal for small Indian kitchens
- Blends seamlessly with kitchen walls



WE DESIGN YOUR DREAM SPACES

01

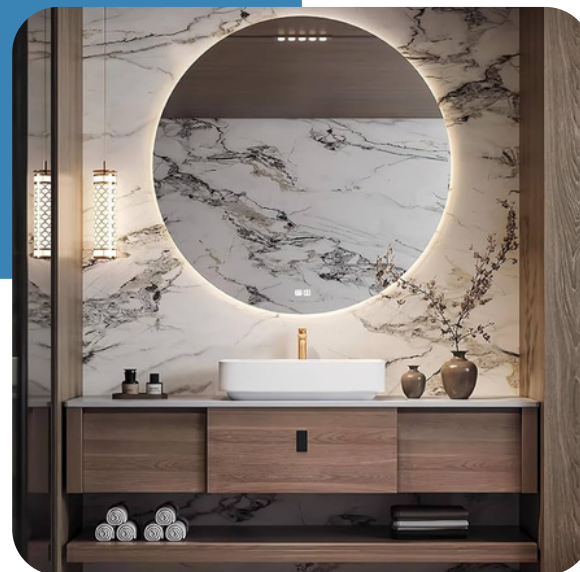
WARDROBES

A modular wardrobe is a custom-designed storage system made with factory-finished panels. It provides organized storage, modern aesthetics, and maximum space utilization for bedrooms.

02

Modular Kitchen

A modular kitchen is a factory-made kitchen system built using pre-designed cabinets (modules) that fit together perfectly. It is designed to offer maximum storage, smooth workflow, modern appearance, and easy maintenance, making daily cooking more comfortable and efficient.





03

WIDE RANGE OF SELECTION

A bathroom vanity is a functional storage unit combined with a washbasin, designed to enhance the look, organization, and hygiene of the bathroom.

Types:

Wall-mounted vanity (modern & space-saving)

Floor-mounted vanity (strong & classic)

Single or double vanity units

Key Features:

Water-resistant materials

Storage drawers & cabinets

Designer basins & countertops

LED mirrors & accessories

04

DURABLE VANITY

A bathroom vanity is a specially designed storage unit combined with a washbasin, created to improve bathroom organization, hygiene, and visual appeal. It neatly hides plumbing while offering convenient storage for daily bathroom essentials.

◆ Purpose of a Vanity

The main purpose of a vanity is to:

- Keep the bathroom clean and clutter-free
- Organize toiletries, towels, and accessories
- Enhance the overall look of the bathroom
- Provide comfortable and practical daily use

◆ Types of Bathroom Vanity

- Wall-Mounted Vanity:
 - Modern, space-saving, and easy to clean the floor underneath.
- Floor-Mounted Vanity:
 - Strong, stable, and provides more storage capacity.
- Single Vanity:
 - Ideal for compact or guest bathrooms.
- Double Vanity:
 - Perfect for master bathrooms and luxury homes.





05 L-Shape

An L-shape kitchen is a modular kitchen layout where cabinets and countertops are arranged along two adjacent walls, forming the shape of the letter “L”. It is one of the most popular and practical kitchen layouts, especially for Indian homes.

◆ How an L-Shape Kitchen Works

- One counter runs along the longer wall
- The second counter runs along the side wall
- The corner area is used for smart storage solutions
- The open side allows easy movement and flexibility



06

U-Shape Modular Kitchen

Maximum Storage & Working Area

A U-shape kitchen is a modular kitchen layout where cabinets and countertops are arranged along three connected walls, forming the shape of the letter “U”. This design offers the maximum storage capacity and the largest continuous working area, making it ideal for frequent cooking and multi-tasking.

◆ How a U-Shape Kitchen Works

- Three sides are used for base and overhead cabinets
- Central working area allows easy movement
- Each wall can be assigned a specific function (cooking, washing, preparation)
- Efficient use of corners with smart storage solutions
-

◆ Why It Offers Maximum Storage

- Cabinets on three sides increase storage space
- Multiple drawers and pull-outs for organized storage
- Tall pantry units for bulk groceries
- Corner units like magic corner / carousel to use deep spaces

07

Parallel / Galley Kitchen



A Parallel (Galley) Kitchen is a modular kitchen layout where two parallel countertops and cabinets are placed on opposite walls, creating a straight walkway in between. This layout is specially designed for long and narrow kitchen spaces, making the best use of available area.

◆ Step 1: Layout Structure

- Two counters run parallel to each other
- Middle space is kept as a clear walking and working path
- No corner wastage, making it very efficient

◆ Step 2: Separate Work Zones

This kitchen layout allows clear zoning, which improves efficiency:

- Cooking Zone: Hob, chimney, drawers on one side
- Washing & Prep Zone: Sink, prep counter, storage on the opposite side

This separation makes cooking faster, cleaner, and more organized.



08

Island Kitchen

An Island Kitchen is a modern kitchen layout that includes a freestanding counter (island) placed in the center of the kitchen, along with cabinets on the surrounding walls. This design offers a luxury appearance, extra workspace, and enhanced functionality.

◆ Step 1: Layout Structure

- Main kitchen cabinets are placed along the walls
- A separate island counter is positioned in the center
- Clear walking space is maintained around the island

◆ Step 2: Purpose of the Island

The island can be used for:

- Additional food preparation space
- Extra storage cabinets & drawers
- Breakfast counter or casual dining
- Optional hob or sink (if space and plumbing allow)

09

Straight Kitchen



A Straight Kitchen is a modular kitchen layout where all cabinets, appliances, and the countertop are arranged along a single wall in one straight line. It is designed for compact spaces and offers a clean, minimal, and modern look.

- ◆ Step 1: Layout Structure
 - All units (sink, hob, storage) are placed on one wall
 - No side or corner counters
 - Keeps the kitchen layout simple and uncluttered
- ◆ Step 2: How It Works
 - Sink, hob, and prep area arranged in sequence
 - Easy movement with everything within reach
 - Efficient for light to medium cooking

10

C-SHAPE Kitchen



A C-Shape kitchen is a modular kitchen layout where cabinets and countertops are arranged along three sides with a partial opening, forming the shape of the letter “C”. It offers high storage and large working space, similar to a U-shape kitchen, but with a more open and accessible feel.

◆ Step 1: Layout Structure

- Counters run along three connected sides
- One side remains partially open (unlike a closed U-shape)
- The open end can be used as a breakfast counter or entry

◆ Step 2: How It Works

- Each side can be assigned a clear function:
 - Cooking zone (hob + chimney)
 - Washing zone (sink + prep area)
 - Preparation / storage zone



01

Wide Range of Wardrobe Selections

We offer a wide range of modular wardrobe solutions, designed to suit different room sizes, storage needs, and style preferences. From compact bedrooms to luxury spaces, our wardrobes combine functionality, durability, and modern design.

◆ 1. Types of Wardrobes

Choose the style that fits your space:

- Hinged Wardrobes: Classic design with full access and easy use
- Sliding Wardrobes: Space-saving and modern, ideal for compact rooms
- Walk-In Wardrobes: Luxury storage with separate sections
- Corner Wardrobes: Smart use of unused corners

◆ 2. Door & Shutter Options

Multiple door styles to match interiors:

- Sliding doors
- Hinged doors
- Mirror doors
- Glass doors
- Handle or handle-less designs

02

High-Quality Stainless Steel Used – Wardrobes

We use high-quality stainless steel (SS) in our wardrobes to ensure strength, durability, and long-lasting performance. Stainless steel components enhance both the structural integrity and smooth functionality of the wardrobe.

◆ Why Stainless Steel is Used in Wardrobes

Stainless steel is chosen because it is:

- Rust-free and corrosion-resistant
- Strong enough to handle heavy daily usage
- Long-lasting with minimal maintenance
- Hygienic and safe for home interiors

◆ Where Stainless Steel is Used

High-quality SS is used in key wardrobe components such as:

- Hanging rods (supports heavy clothes without bending)
- Drawer channels (smooth and silent movement)
- Hinges & fittings (long life, no sagging)
- Internal frames & supports
- Handles and profiles (premium finish)





03

HANDCRAFTED WARDROBES

Handcrafted wardrobes are carefully made by skilled craftsmen, where every detail is shaped, finished, and assembled with precision. Unlike mass-produced units, handcrafted wardrobes focus on quality, durability, and fine detailing, giving your bedroom a truly premium and personalized look.

◆ What “Handcrafted” Means

Handcrafted wardrobes are:

- Made with expert manual workmanship
- Carefully measured, cut, and finished by experienced carpenters
- Individually checked for quality at every stage

This ensures better finishing and longer life.

◆ Superior Craftsmanship

- Accurate alignment of shutters and panels
- Smooth edges and perfect joints
- Attention to small details that machines often miss

This craftsmanship results in a refined and elegant wardrobe.



04

Playful with Textures-wardrobes

Playful with Textures wardrobes are designed by combining different surface finishes and materials to create a visually rich, modern, and stylish wardrobe. Instead of a single plain finish, textures add depth, contrast, and character to the bedroom.

◆ What “Playful with Textures” Means

It means mixing and matching:

- Wood grain + solid colors
- Matte + glossy finishes
- Laminate + glass or mirror
- Neutral shades + bold accent panels

This creates a wardrobe that looks dynamic and premium, not flat or boring.

◆ Types of Textures Used

- Wood textures: Natural, warm, and timeless
- Matte textures: Soft, elegant, and fingerprint-resistant
- Glossy textures: Bright, modern, and reflective
- Fabric / leather-finish laminates: Luxury touch
- Glass or mirror panels: Adds light and spacious feel



05

CUSTOMIZED PRODUCT

Customized wardrobes are made-to-measure storage solutions designed specifically for your room size, lifestyle, and storage needs. Every detail—size, layout, finish, and accessories—is tailored to ensure maximum utility, perfect fit, and a personalized look.

◆ What “Customized” Means

Customization means the wardrobe is:

- Designed as per exact room dimensions
- Planned around your storage habits
- Finished to match your bedroom style
- Built to fit corners, niches, and ceiling height—no gaps, no wastage

◆ Size & Layout Customization

- Floor-to-ceiling height options
- Custom width and depth
- Hinged, sliding, corner, or walk-in formats
- Left/right opening based on room flow

Wardrobes



**Walk in
and flaunt
your
collection**



Guided by a strong principle, We incorporate a rang of intelligent design. While flaw- less hardware an unmatched user experience.



SIMPLY STUNNING

Bathroom innovations that captivate your imagination and delight your soul. We offer you vanities that become your style statement and leave you spellbound, every single day. A great design maximizes space, caters for storage and is easy to maintain and clean.





01

ENHANCIVE & APPEALING UTILITY

An Enhancive & Appealing Utility Vanity is designed to upgrade both the functionality and visual appeal of your bathroom. It smartly combines efficient storage, elegant design, and easy usability, turning a daily-use area into a refined and organized space.

✦ Enhancive Design

The vanity enhances your bathroom by:

- Improving overall aesthetics
- Creating a neat, clutter-free environment
- Adding a modern and premium touch

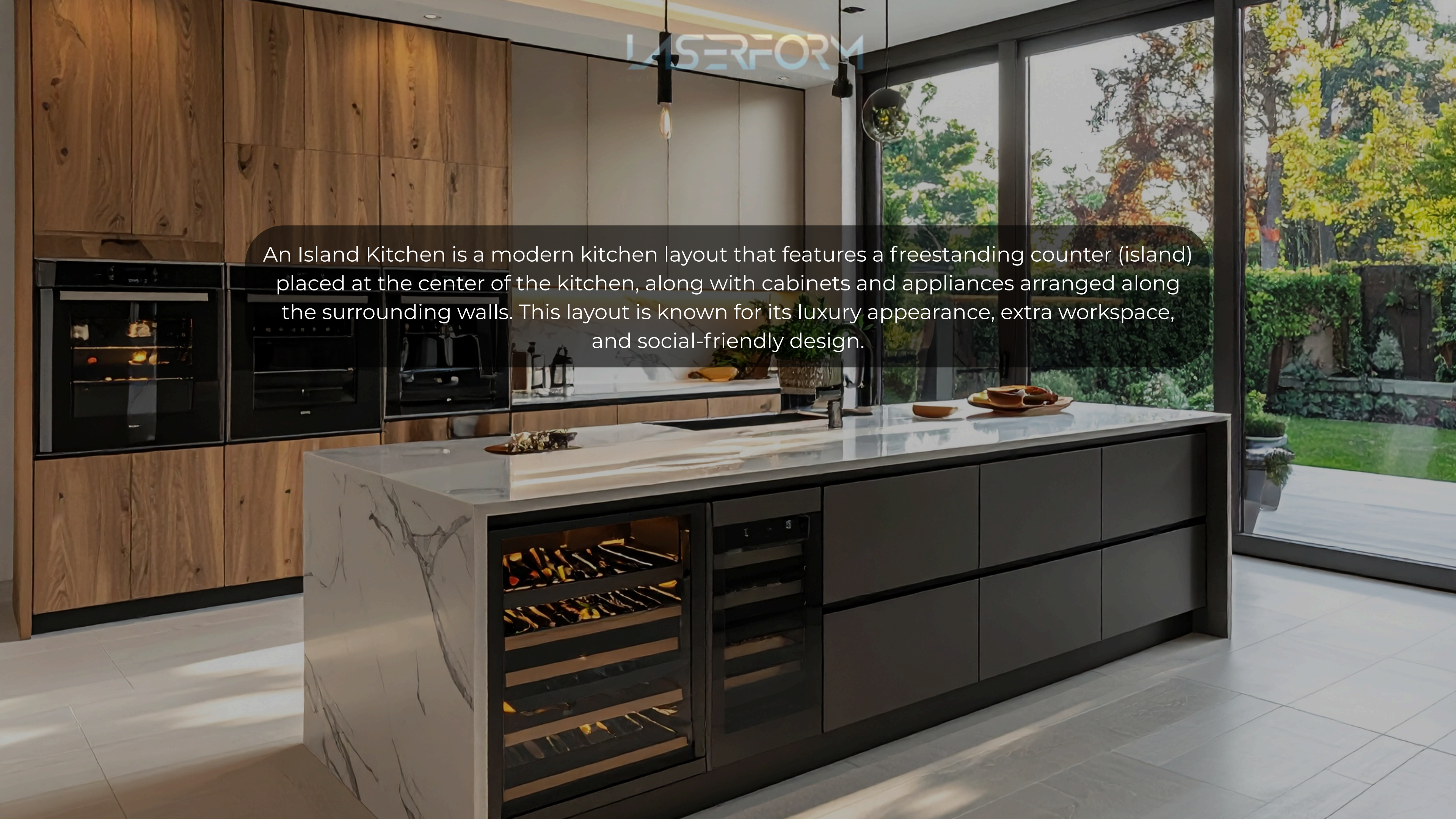
Every design element is thoughtfully planned to elevate the look and comfort of the space.

🎨 Appealing Aesthetics

With stylish finishes, clean lines, and balanced proportions, the vanity becomes a visual highlight of the bathroom—simple yet elegant, modern yet timeless.

Durable, moisture-resistant materials and seamless surfaces make cleaning effortless, ensuring your vanity looks beautiful day after day.

An Island Kitchen is a modern kitchen layout that features a freestanding counter (island) placed at the center of the kitchen, along with cabinets and appliances arranged along the surrounding walls. This layout is known for its luxury appearance, extra workspace, and social-friendly design.



Modular Kitchen



Vision

Our vision is to become a trusted and preferred interior solutions brand, known for quality craftsmanship, innovative designs, and complete customer satisfaction. We aim to create homes that are not only beautiful but also practical, comfortable, and long-lasting.

About Vision

Our vision is to transform living spaces into well-designed, functional, and inspiring homes. We strive to combine modern design, premium materials, and skilled workmanship to deliver interiors that enhance everyday life.

We envision building long-term relationships with our customers by maintaining transparency, reliability, and consistent quality. Through continuous improvement and attention to detail, we aim to set new standards in modular kitchens, wardrobes, and bathroom vanities. Our goal is to grow with our customers' trust and become a name that represents excellence, innovation, and happiness in every home we create.



+12K
Teams

Mission

Our mission is to deliver high-quality interior solutions that bring comfort, functionality, and happiness to our customers. We focus on excellent workmanship, timely delivery, and honest service, ensuring every customer feels satisfied and confident in choosing us.

✓ 01. Mission

Our Mission

To make every customer happy by delivering quality work, thoughtful design, and reliable service—on time, every time.

✓ 02. Mission

Our mission is to transform homes with smart design solutions for kitchens, wardrobes, and bathrooms. We aim to build long-term relationships by offering durable products, transparent communication, skilled workmanship, and after-sales support, ensuring complete customer satisfaction.

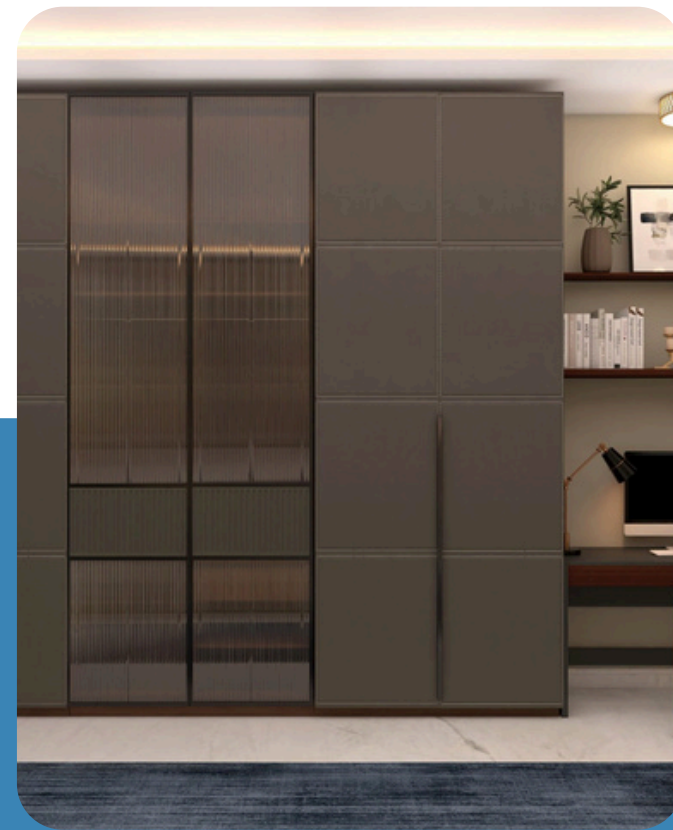


Complete Interior Solutions

Below is a complete, easy-to-understand explanation of ALL THREE — Modular Kitchen, Wardrobes, and Vanity — written in brochure-ready professional language.



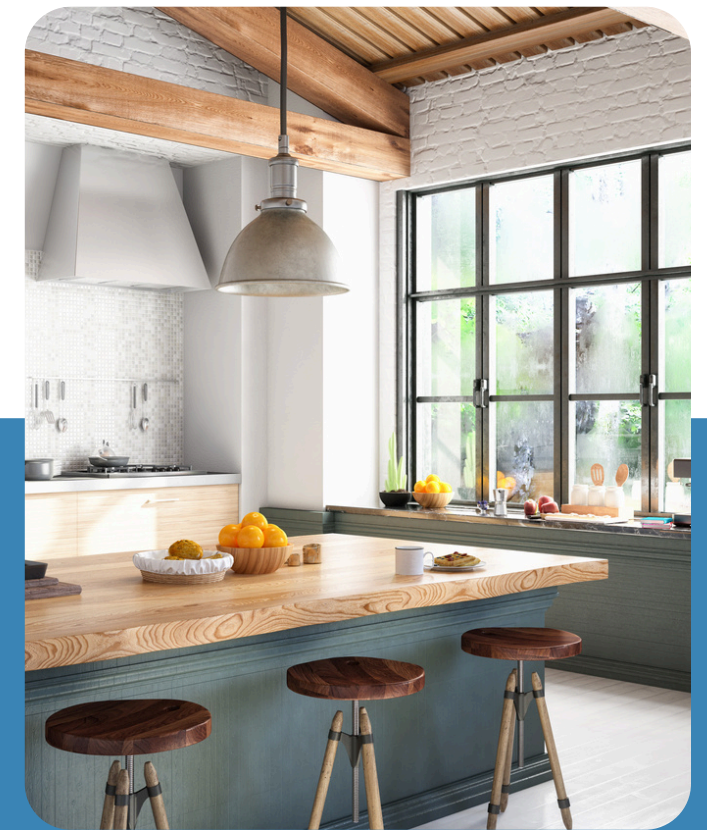
A bathroom vanity is a storage cabinet combined with a washbasin, designed to improve bathroom organization, hygiene, and appearance. It hides plumbing while providing space for toiletries and essentials.



A modular wardrobe is a custom-designed storage system for bedrooms, made with durable materials and factory-finished shutters. It helps keep clothes, accessories, and essentials well-organized and easily accessible.



A modular kitchen is a pre-designed, factory-finished kitchen system made of individual cabinets (modules) that fit together perfectly. It is designed to offer maximum storage, smooth workflow, modern looks, and easy maintenance.



Contact Information



Website

laserform.co.in



Contact

+91 9811735500



Soical Media

Laserform127@gmail.com

Thank You

We believe that great interiors are built not only with quality materials but also with honest communication, skilled workmanship, and long-term support. Your trust motivates us to continuously improve and deliver designs that bring comfort, beauty, and functionality into your daily life.

